



City of Alexandria



# Hume Avenue Stormdrain Bypass

Pre-Construction Kickoff Meeting

March 23, 2026



# Agenda

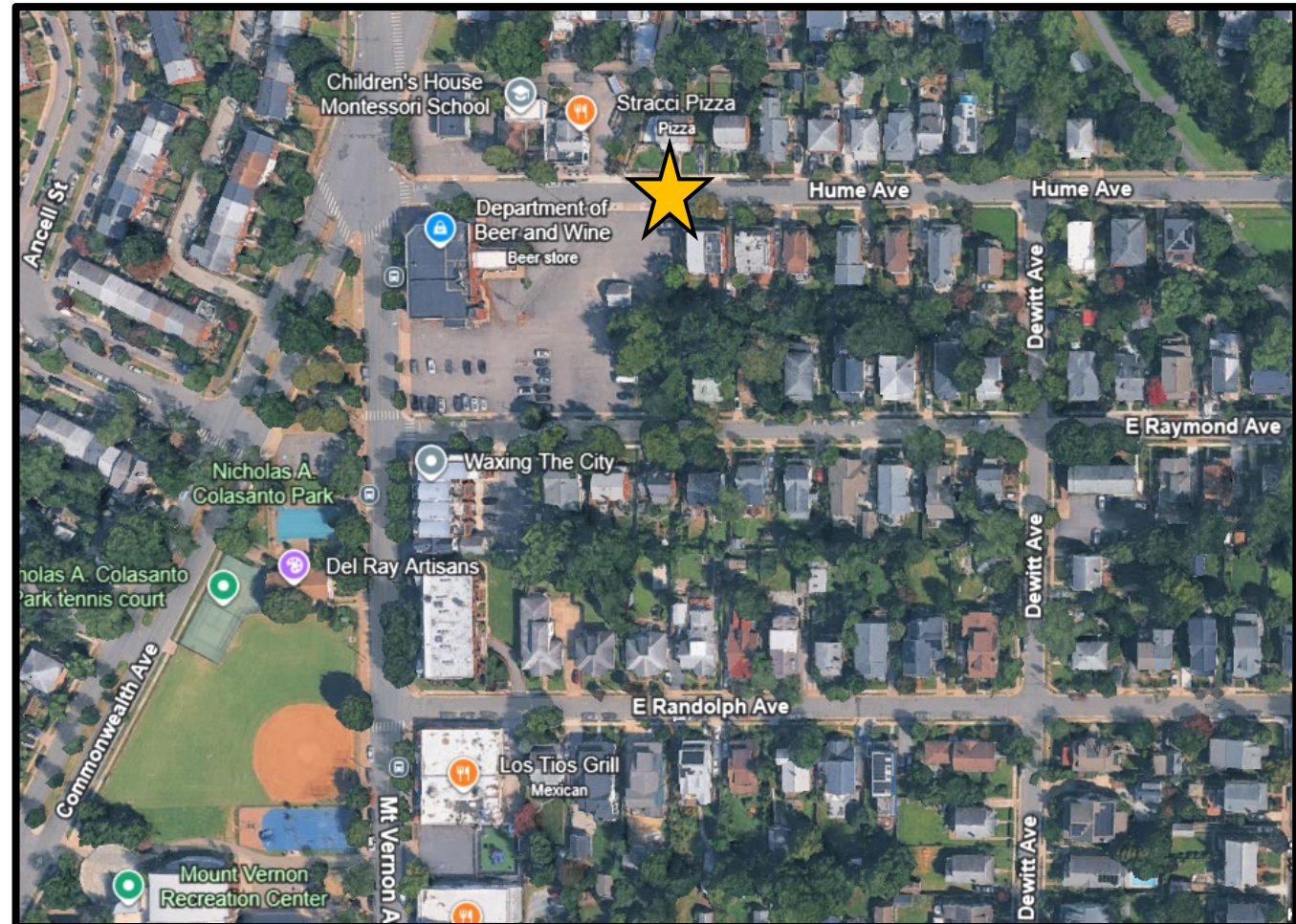


1. Project team introductions
2. Project location & background
3. Project goals
4. Proposed design & utility work
5. Project performance
6. Project schedule
7. Temporary impacts
8. Local grant programs & City initiatives
9. Questions



# Project Location & Background

- Located along the 100 block of Hume Avenue and 100 block of East Raymond
- Outfalls to Four Mile Run
- Proposed inlets require expansion of storm sewer systems along both streets
- Flooding overtops street curbs and collects in yards bound between Hume & East Raymond
- Flooding also collects along Hume Avenue impacting private property and vehicles parked along the street





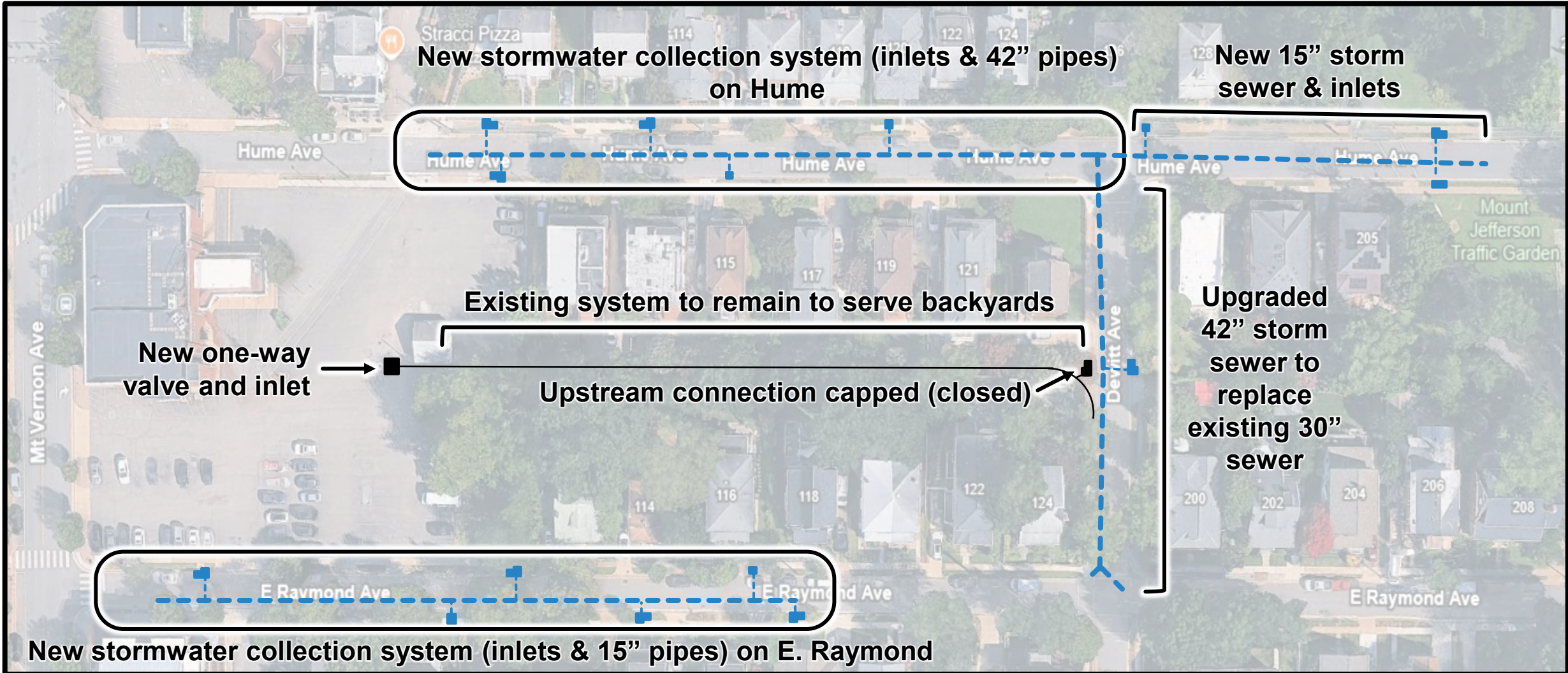
# Project Goals

- ✓ **Reduce flooding along West Reed Avenue, Dale Street, and the Community Garden through new storm sewer pipes and inlets**
- ✓ **Manage runoff from frequent storm events within the public right-of-way**
- ✓ **Minimize flooding impacts from larger storm events to the extent practicable**
- ✓ **Limit construction-related impacts on the surrounding community**
- ✓ **Ensure proposed improvements do not worsen flooding elsewhere**



# Proposed Design

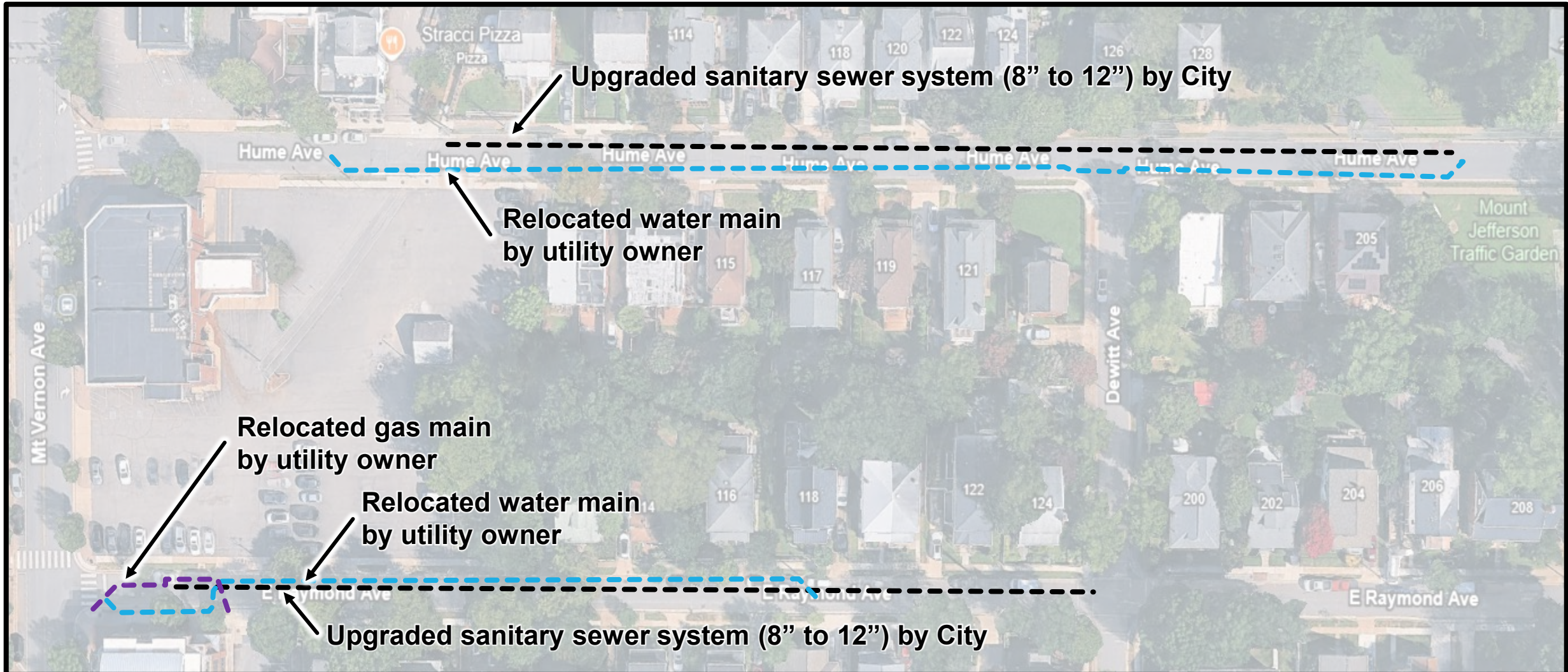
- Hume roadway to be re-built following utility work





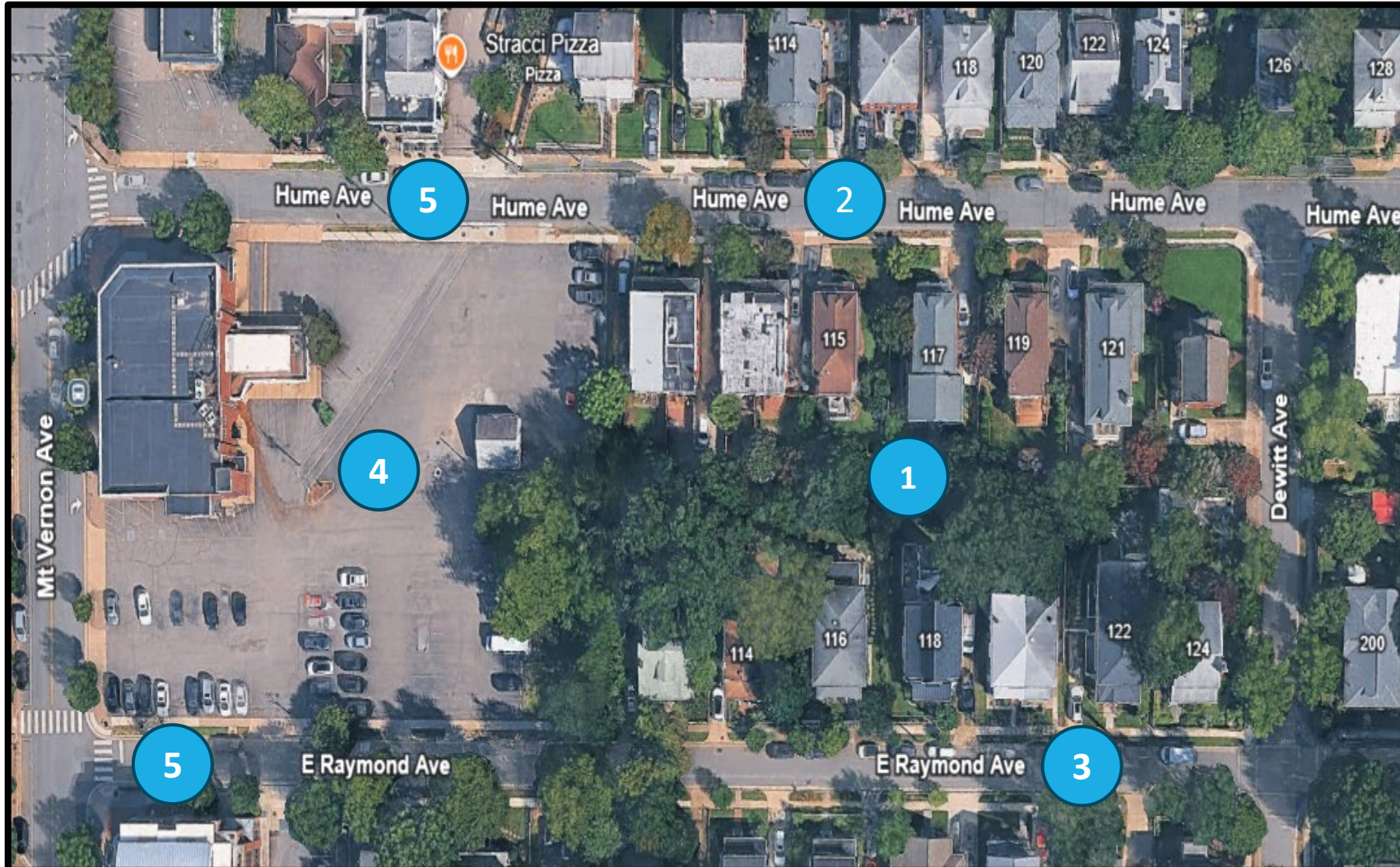
# Auxiliary Utility Work

- Daytime parking restrictions will be required
- Utility companies will notify impacted residents





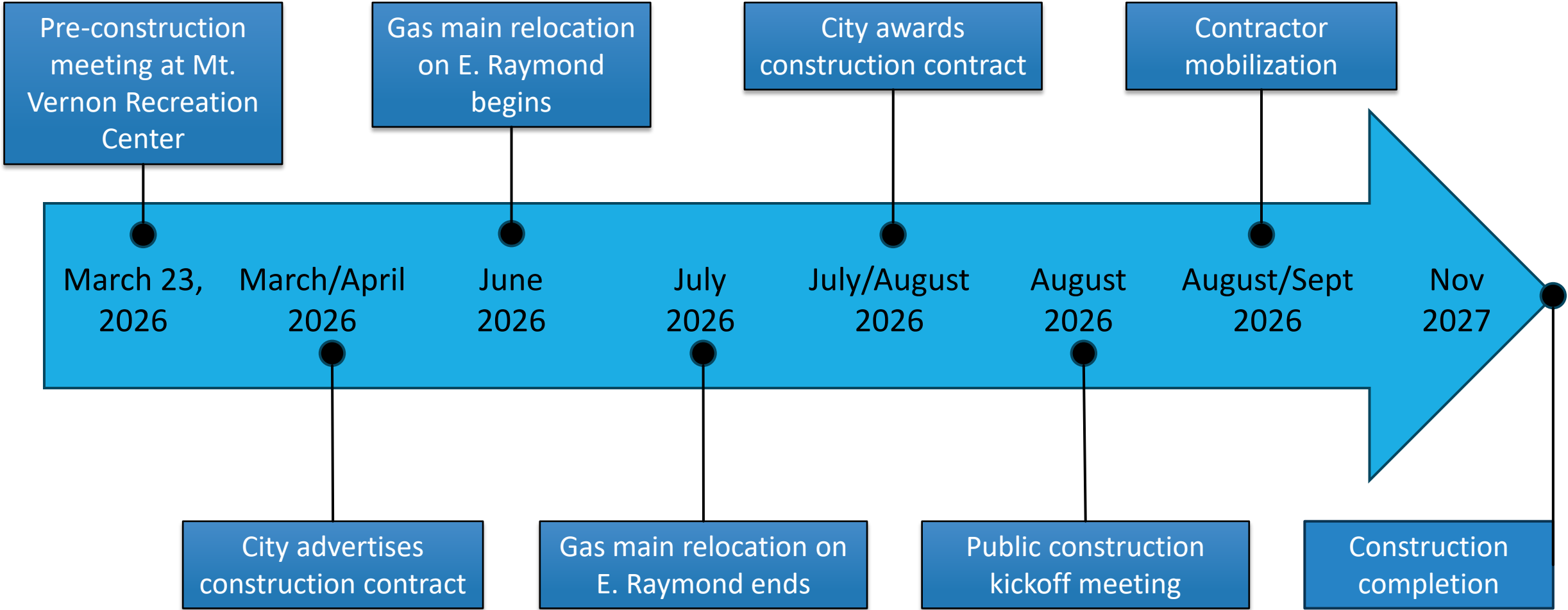
# Project Performance



1. Flooding behind homes on Hume & E. Raymond Sts. is mitigated
2. Flooding along Hume is reduced by about 6 inches
3. Flooding along E. Raymond is contained within the right-of-way
4. Flooding in the parking area is reduced by 3 inches
5. Flooding at low points is reduced by about 6 inches



# Preliminary Schedule



*Dates are estimated using the best information available.*



# Temporary Impacts: Noise



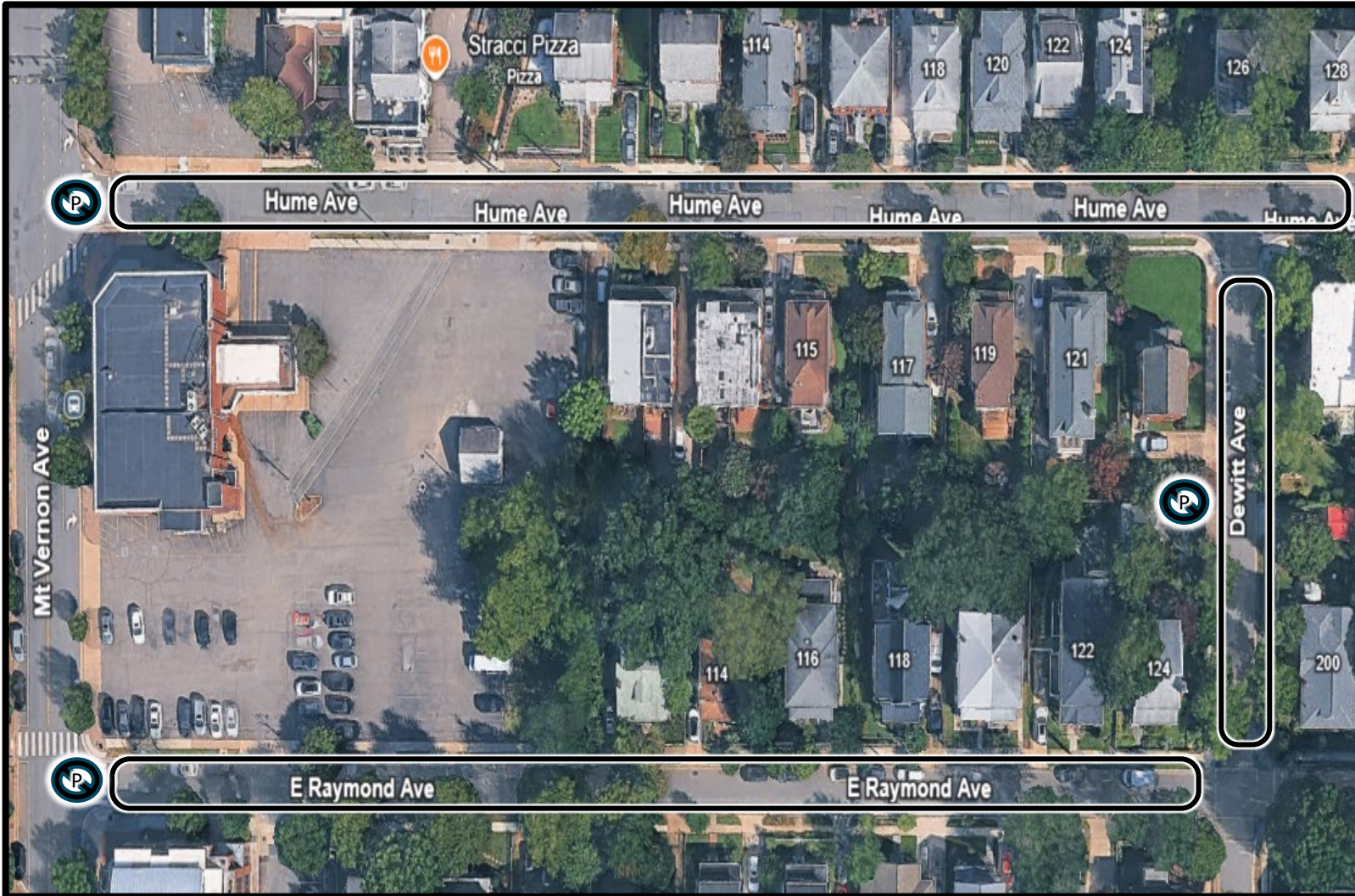
## **Construction operations will be limited.**

- Monday through Friday: 7:00 AM to 6:00 PM
- Saturday (only if an emergency): 9:00 AM to 6:00 PM.

Construction operations will comply with all local, state and federal codes, permits and regulations.



# Temporary Impacts: Access & Parking

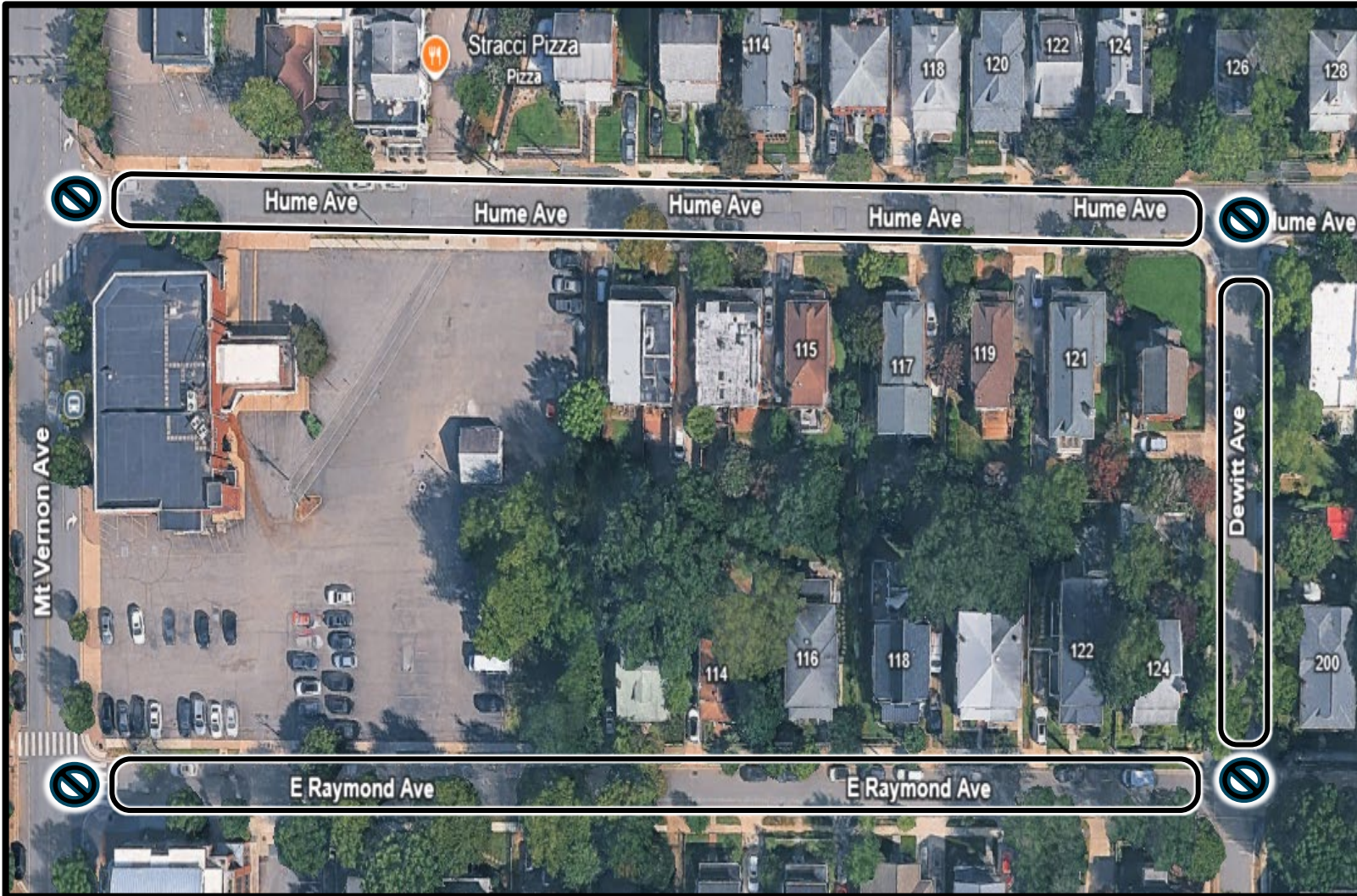


- Daytime parking restrictions will be required
- Daytime, road closures are likely to be required
- Access to residences will always be maintained
- Sidewalk closures will be required
- Restrictions will be phased to reduce community impact
- Trash & recycling pick-up will continue through out construction

*Schematic are representative based on the best information available*



# Temporary Impacts: Access & Parking



- Roadway resurfacing and specific construction operations will likely require overnight road closures
- Restrictions will be phased to reduce community impact
- Access to residential driveways will be maintained. Drive through access will not be possible
- Restrictions shown are approximate

*Schematic are representative based on the best information available*



# Temporary Impacts: Access & Hauling

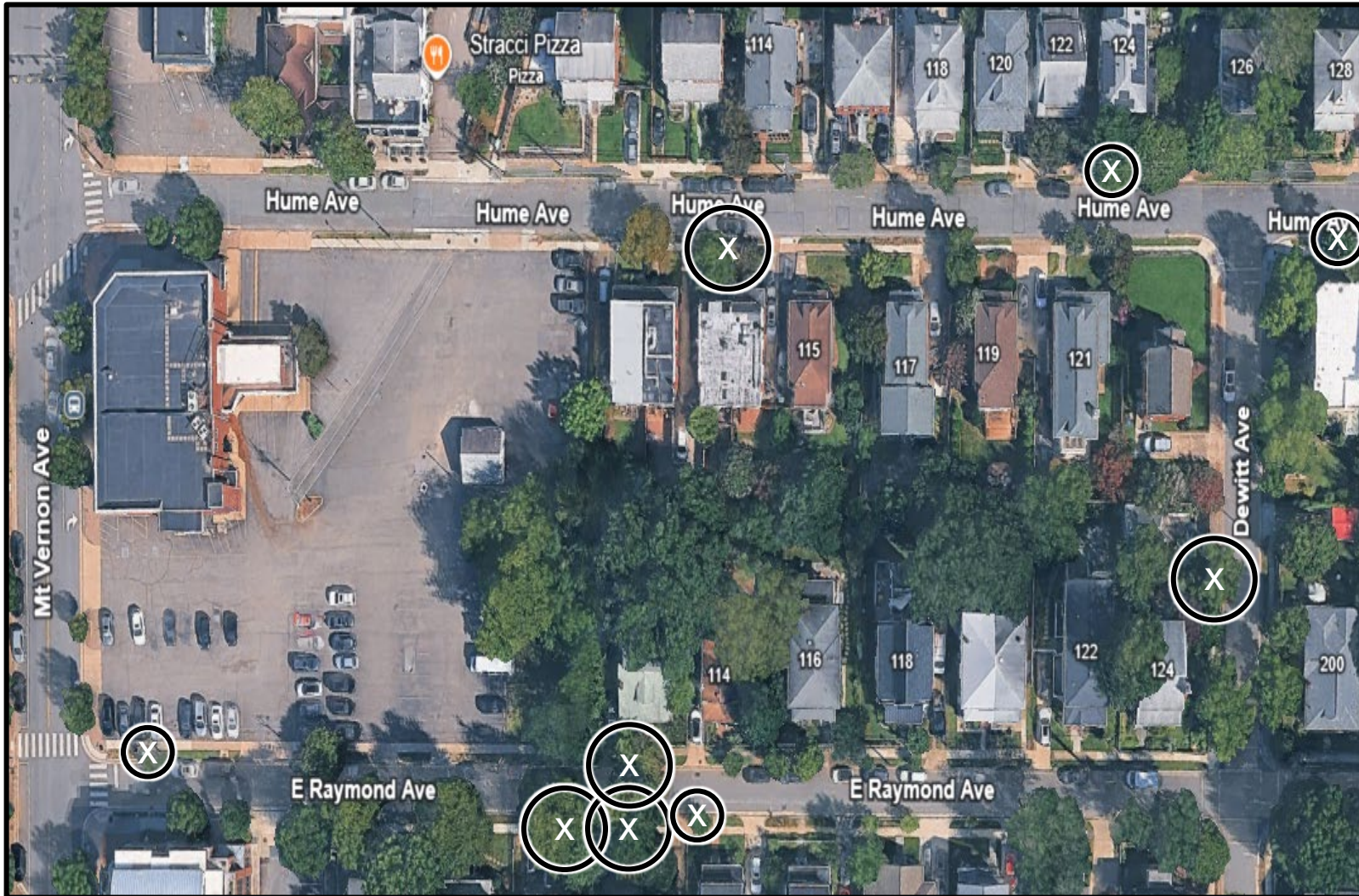


- To complete the project, hauling along Hume, East Raymond and Dewitt will be required.
- To reduce community parking impact, the City has coordinated and received approval to stockpile materials outside of the right-of-way and within the adjacent parking lot
- Access to portions of the private parking lot will be restricted

*Schematic are representative based on the best information available*



# Temporary Impacts: Tree Removals



- Tree removals may be required due to anticipated damage to their root systems
- Any removals are to ensure public safety
- Damage to each tree's roots will be inspected to decide if removals are necessary
- The City will replace trees that must be removed
- No private trees will be impacted or removed by the City

*Schematic are representative based on the best information available*



# Flood Mitigation Grant Program

- City's sponsored cost reimbursement assistance program provides up to 50% of the total costs of eligible floodproofing measure(s) and associated costs, up to a maximum amount of \$5,000, per property.

## Examples of Supported Practices



### Basement and Utilities

- Sump pump battery backups
- Drain tiles below basement floors
- Flood vents
- Utility flood covers
- Interior concrete or masonry walls
- Elevated electrical outlets and switches
- Quick Connect system
- Elevated utilities and service equipment



### Exterior and Topography

- Surface grading
- Protective walls
- Impermeable soil materials
- Flood walls
- French drain systems
- Earthen berm construction
- Sandless or traditional sandbags
- Flood resistant building materials

### Windows and Doors

- Permanent glass protection
- Basement window protection
- Ground floor or basement window wells and drains
- Temporary or permanent doorway flood gate or panel
- Flood socks
- Temporary quick dams

## Public Webpage

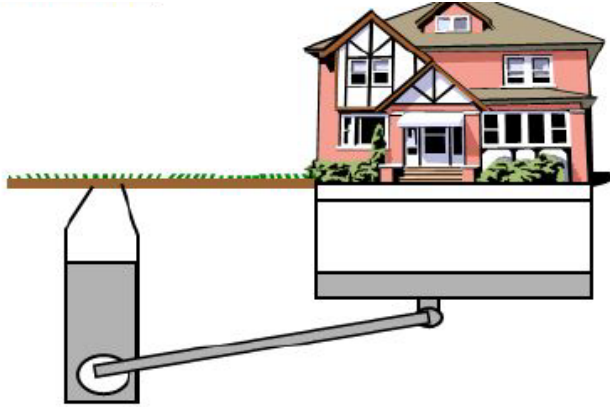


(Or at [alexandriava.gov/FloodAction](https://alexandriava.gov/FloodAction))  
[FloodGrant@alexandriaVA.gov](mailto:FloodGrant@alexandriaVA.gov)



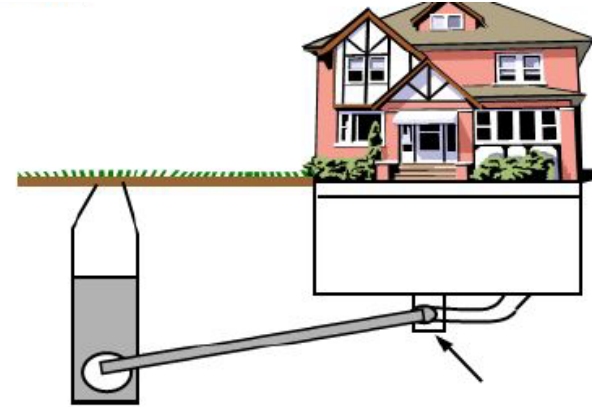
# San. Backflow Preventer Program

What is a basement back-up?



**Rainfall overloads sewers – backs-up into basement**

What is a backflow preventer (BFP)?



**BFP stops flow from sewer from entering basement**

- The City has implemented a cost reimbursement assistance program to support city residents who purchase backflow preventers to mitigate in-home flooding from sanitary back-ups
- 50% match of installation costs up to \$2,000 for eligible residents
- More information at [alexandriava.gov/go/2313](https://alexandriava.gov/go/2313)
- Contact TES Sanitary Infrastructure Division with questions at 703.746.4678 or [BackflowPreventor@alexandriava.gov](mailto:BackflowPreventor@alexandriava.gov)



# City Tree Planting Program

- The City's Tree Planting Program is a public-private partnership to improve tree canopy coverage

- Plantings occur seasonally between November and May

- Completed within 240 days under standard circumstances

- Submit work requests through Alex 311: <https://alex311.alexandriava.gov/customer/servicetypes>

- For more information visit: <https://www.alexandriava.gov/parks/tree-planting>

The screenshot shows the Alex 311 website interface. At the top, there is a navigation bar with links for 'Request', 'Status', 'All Services', '24-Hour Hotlines', 'Alerts', and 'Login'. Below the navigation bar is a search bar with the text 'How can we help?'. The main content area is divided into two columns. The left column is titled 'Get Help With:' and lists various service categories: 'Parking & Transportation', 'Payments & Taxes', 'Recreation & Cultural Activities', 'Recycling & Trash', and 'Tree Services'. The 'Tree Services' category is highlighted with a red box. The right column is titled 'Tree Services:' and lists three specific services: 'Tree Inspection Request', 'Tree Planting Request', and 'Tree Storm Damage'. The 'Tree Planting Request' service is highlighted with a red box. A red arrow points from the 'Tree Services' category in the left column to the 'Tree Planting Request' service in the right column.



# Questions & Contacts



## Primary Points of Contact

Mitch Dillon (T&ES)

(703) 746.4028

[Mitch.Dillon@alexandriava.gov](mailto:Mitch.Dillon@alexandriava.gov)

## Project Webpage



(Or at [alexandriava.gov/go/4185](https://alexandriava.gov/go/4185))

## Stormwater Utility & Flood Mitigation Advisory Committee



(Or at [alexandriava.gov/go/2313](https://alexandriava.gov/go/2313))



# Public Engagement

- **Webpage updates: Semimonthly**
- **Stormwater Utility & Flood Mitigation Committee: Bimonthly**
- **Work Notices**
  - ▶ Survey – September 2022
  - ▶ Test pits – Nov. 2022, May 2023, June 2024, May 2025
- **Public Site Walk: 2021**
- **Project Kickoff Meeting: August 2022**
- **Project Update Public Meeting: September 2023**
- **Final Design Update Public Meeting: March 2026**
  - ▶ Present project goals, project scope, project benefits & project schedule
- **Construction Kickoff Meeting: *August 2026***
  - ▶ Present project scope, construction timeline, construction impact
- **Primary Point of Contact**
  - ▶ Mitch Dillon (TES)
  - ▶ (703) 746.4028
  - ▶ Mitch.Dillon@alexandriava.gov